

# The Imaging Source Helpdesk

Knowledgebase > Troubleshooting > Install Camera Driver Manually

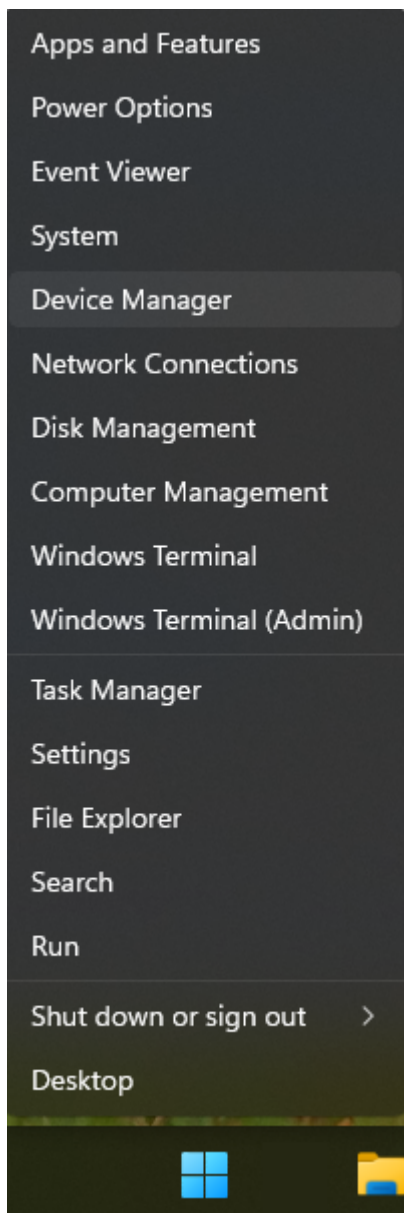
---

## Install Camera Driver Manually

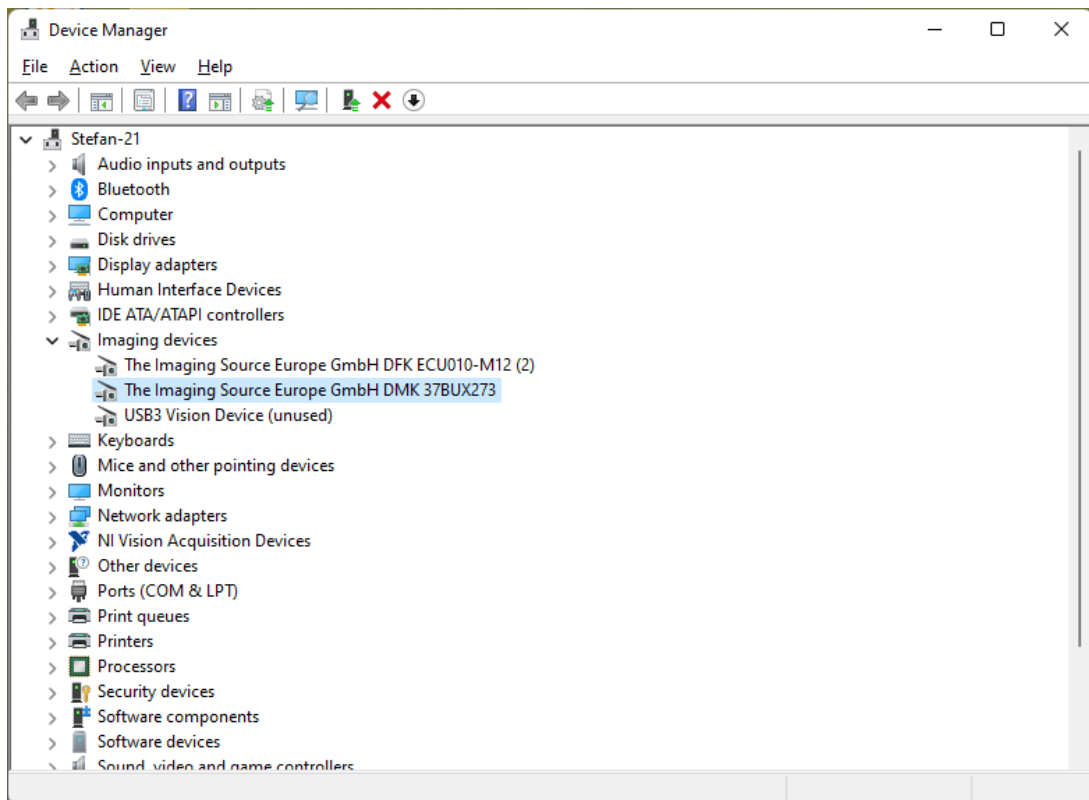
S.Geißler - 2022-04-06 - Troubleshooting

Sometimes the camera driver is not installed, even if the setup of the driver finished successfully. In this situation the Windows Device Manager is used to assign the driver to the camera.

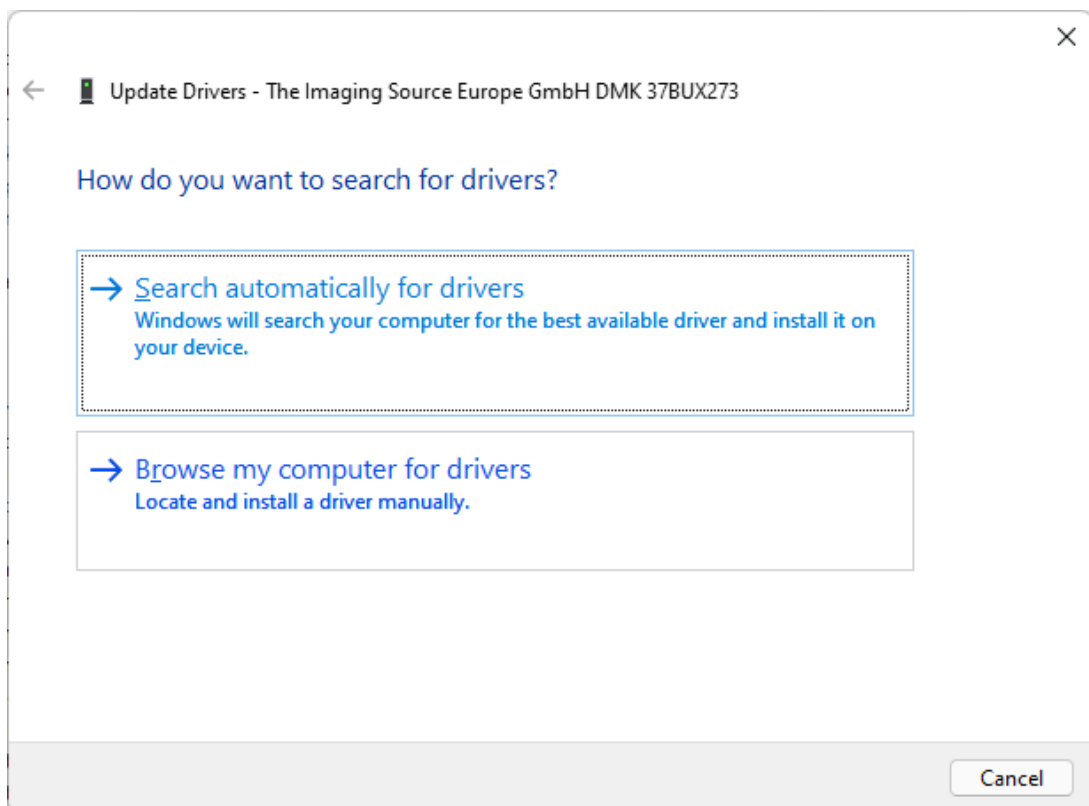
Perform a right mouse click on the Windows Start button and select "Device Manager":



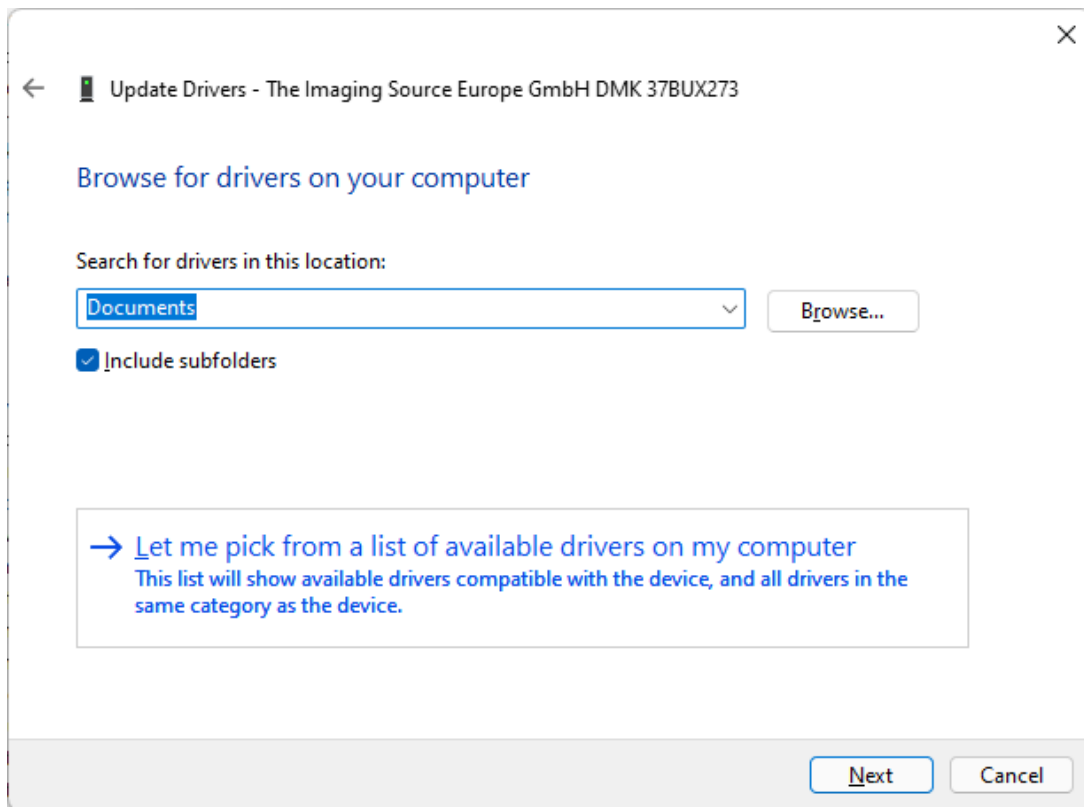
Select your camera the camera:



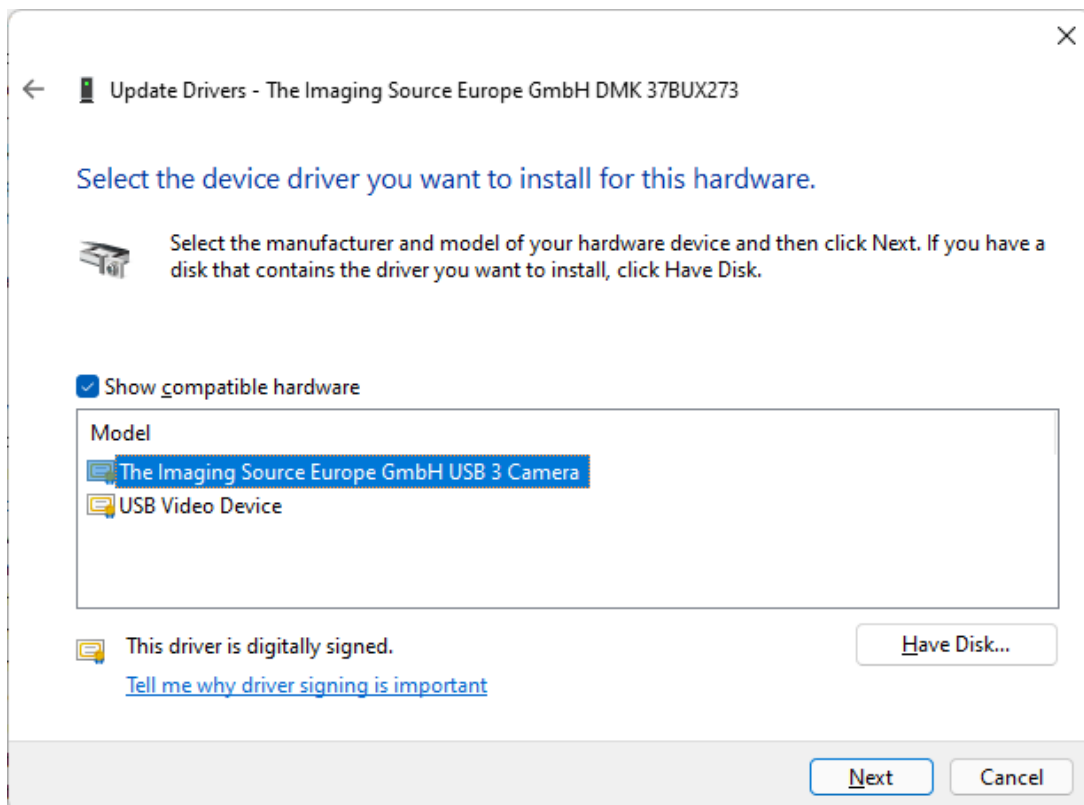
The camera is usually in "Imaging Devices", sometimes in "Cameras" section. If the driver is not installed, the camera name is shown only. Select your camera and right click on it. From the now showing context menu select "Update driver".



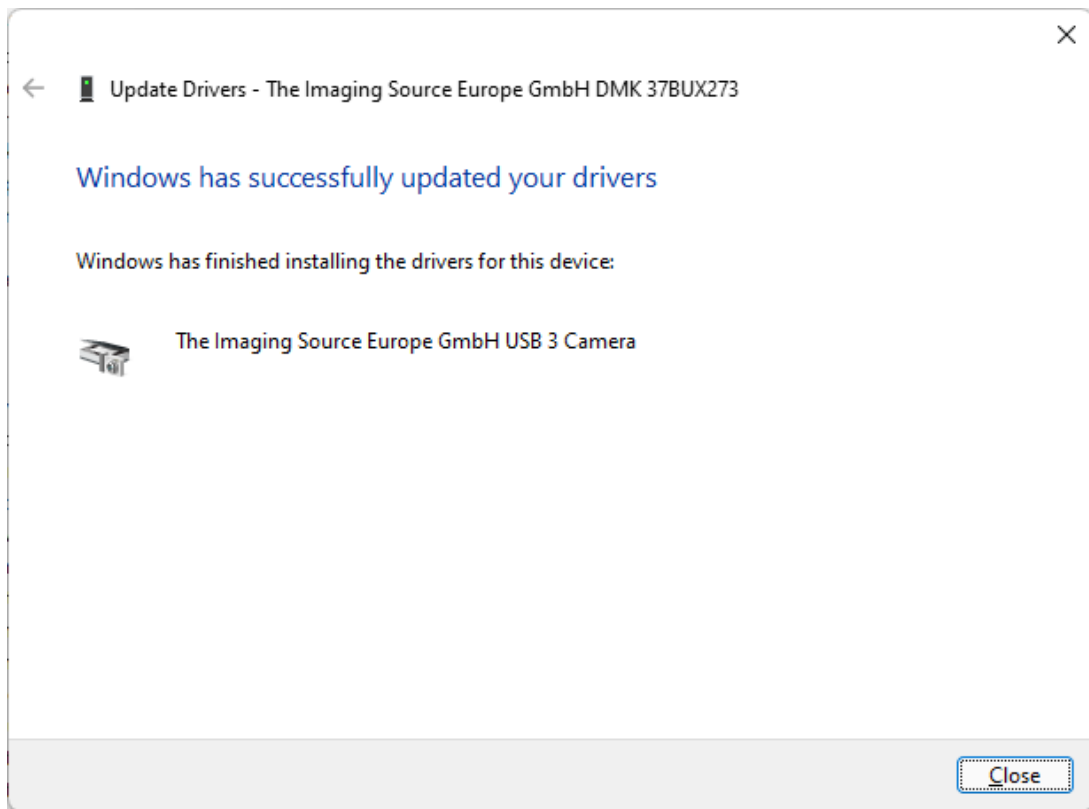
Click on "Browse my computer for drivers". It is always the lower choice.



Click "Let me pick..."



Choose "The Imaging Source Europe GmbH ..." driver and click "Next". After driver installation it looks as follows:



Click "Close".